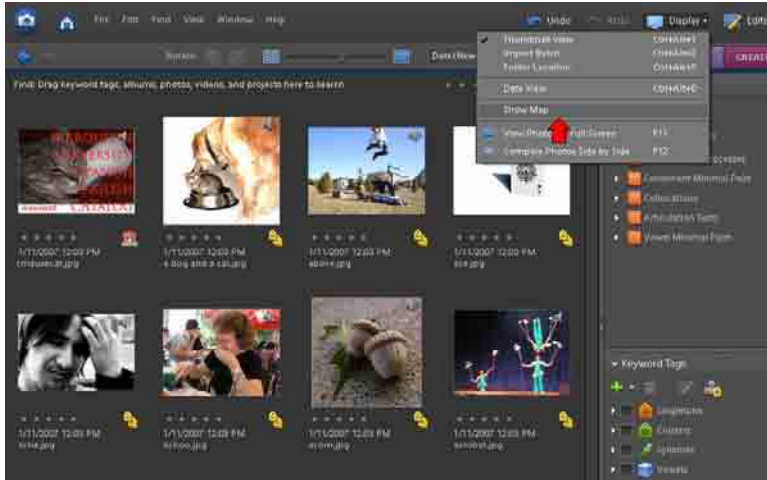




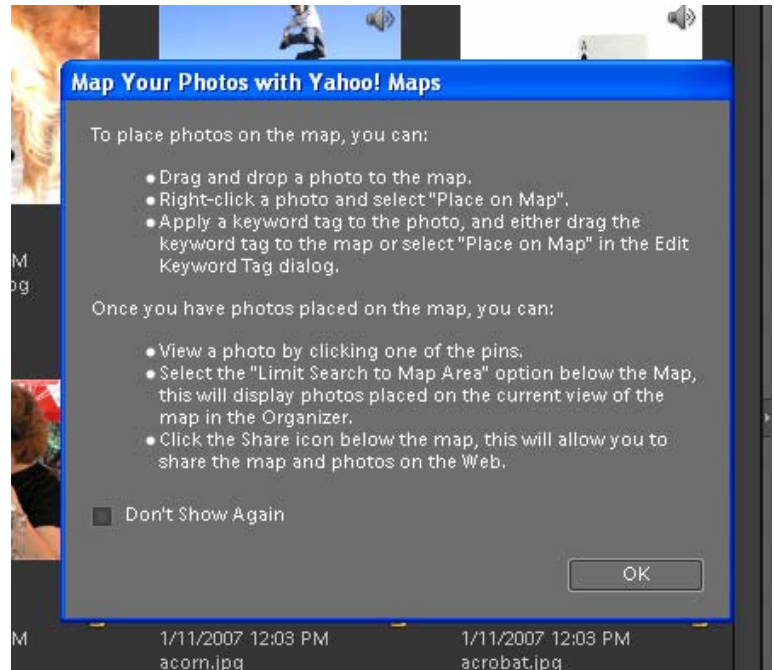
Marquette University Spanish English Catalog (MaUSECat)

How do I play a game in which we place pictures on a map?

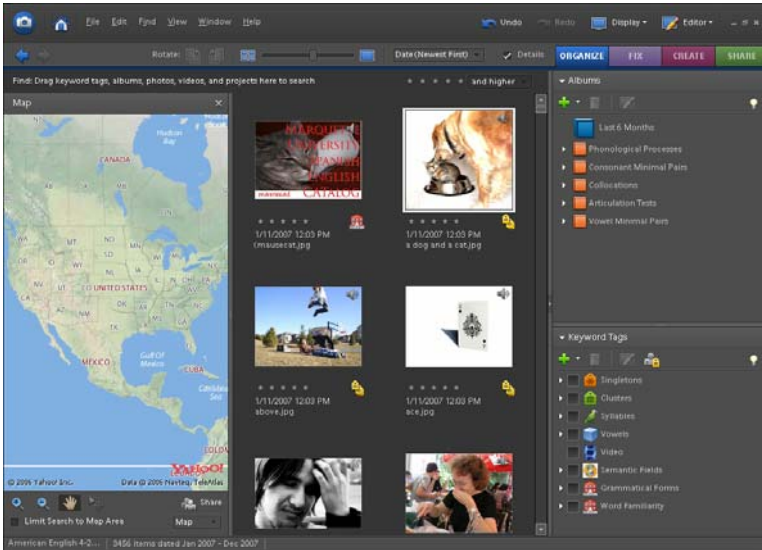


To find the map application, click on the *Display* menu in the upper right hand corner of the screen and then choose *Show Map*.

An instructional window will appear before loading the interactive map onto your screen.



The Yahoo map will appear on the screen.



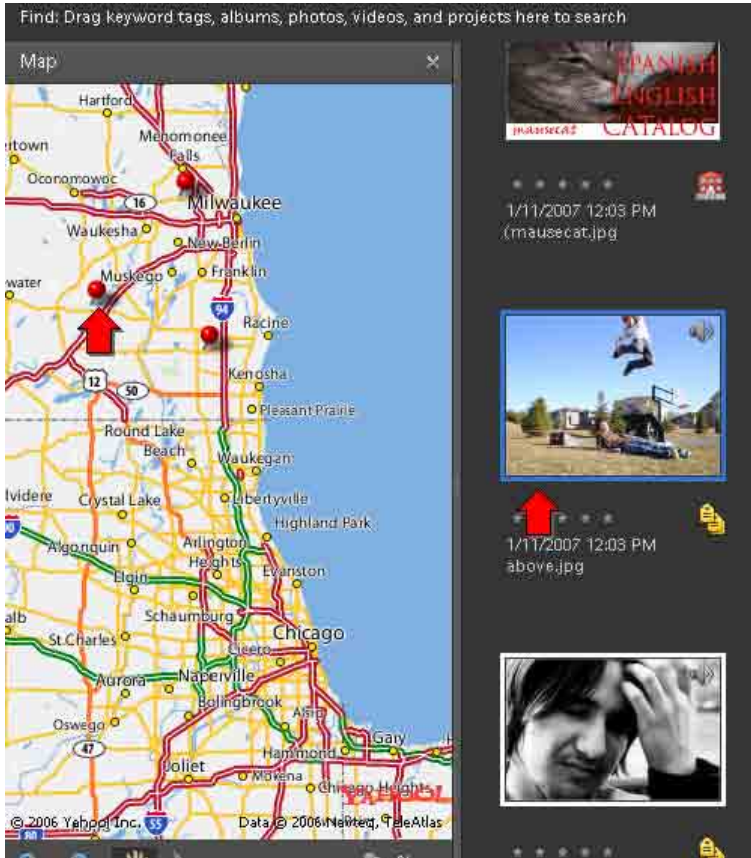
The Yahoo map operates similar to those found on the Internet.

Zoom in or out with the +/- magnifying glass icons in the lower left area of the map.

The hand icon allows for scrolling of the map in any direction.

The Map dropdown menu gives different options for type of map.

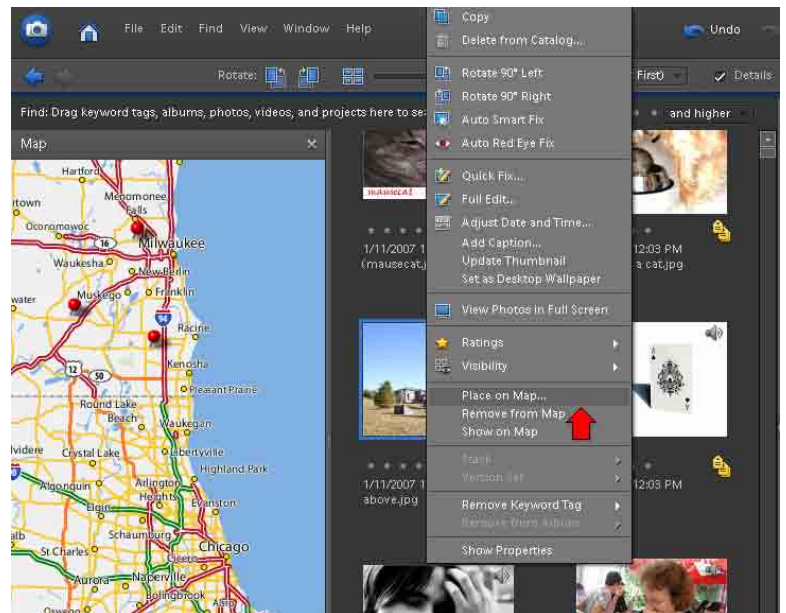




To place photos on the map, click on a photo and drag it to an area of the map. A red pin will appear on the map to signify your photo.

Another option is to right-click on a photo and then select *Place on Map* from the menu that appears.

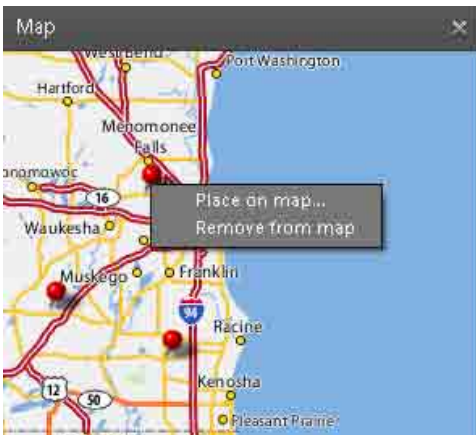
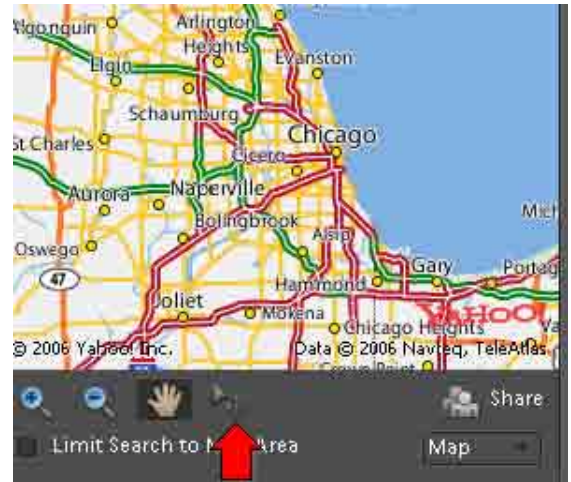
You can also click and drag a tag or album to the map.





To view which photo you placed with which pin, click on the pin and this window will appear.

To move a pin on the screen, click on the *arrow* icon at the bottom of the map. Your cursor will turn into a *white arrow* that you use to click a pin and move it to a new position.



To remove a pin from the map, right-click on it and then choose *Remove from map* from the menu that appears.