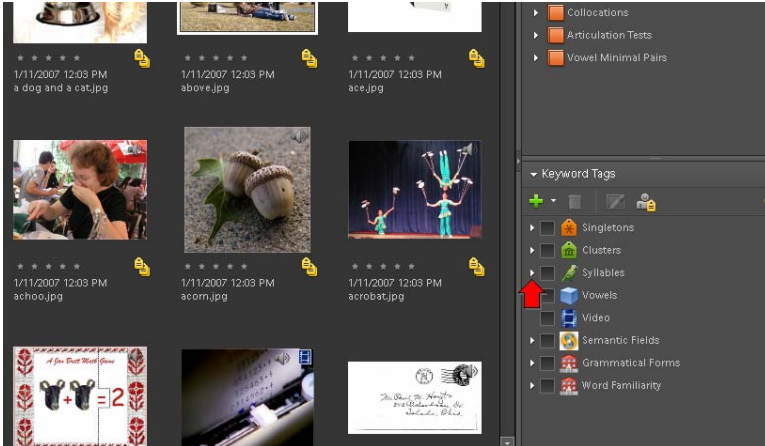




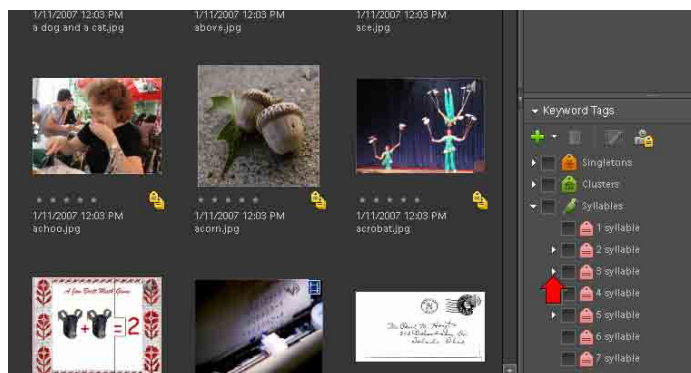
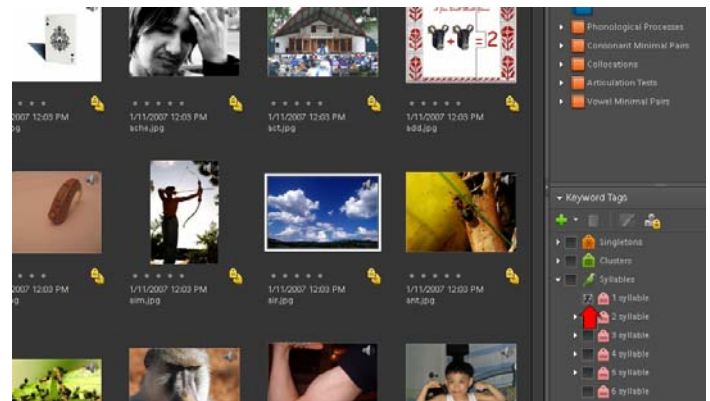
Marquette University Spanish English Catalog (MaUSECat)

How do I select a group of pictures for words with the same number of syllables?



First, click the *triangle* next to *Syllables* on the keyword tags menu.

If you want all the one syllable words in the catalog, click the box next to *1 Syllable* to show those pictures.



For words with more than 1 syllable, you can choose a specific syllable stress pattern. To do this, click the *triangle* next to the category to expand it and view the stress patterns.

How do I select a group of pictures for words with the same number of syllables? 2

For example, to choose 3 syllable words with Sws (primary-weak-secondary) stress pattern click the box next to that label.

